

Are you using ProtectoRelay model RA890? Easily upgrade to the new burner controller, model RB890!

The new burner controller, model RB890, is a combustion safety device for batch operation that was developed specifically to replace model RA890. If you use the replacement base unit, you can keep your existing wiring when upgrading.

Discontinued products

Discontinuation date: April 2015



ProtectoRelay: Model RA890



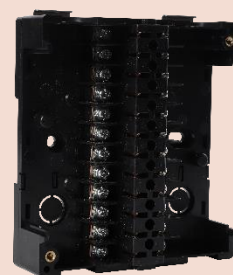
Sub-base: Model Q270



Replacement burner controller: Model RB890



Burner controller (main unit):
Model RB890



Replacement base unit: Model Q890A
(sub-base [model BC-R05] is not necessary)

Replacement chart

Flame Detector	Model No.	Power
Flame Rod	RA890F1460X2	100 V AC
	RA890F1411X2	100 V AC
	RA890F1452X2	208 V AC
	RA890F1296X2	208 V AC
	RA890F1304	220 V AC

Advanced UV Sensor model AUD100	RA890G117X2	100 V AC
	RA890G1278X2	208 V AC
	RA890G1302	220 V AC

Flame Detector	Model No.	Power
Flame Rod	RB890F100	100-115 V AC
	RB890F100	100-115 V AC
	RB890F200	200-230 V AC
	RB890F200	200-230 V AC
	RB890F200	200-230 V AC

Advanced UV Sensor model: Honeywell C7027A, C7035A, AZBIL: AUD100/110/120	RB890U100	100-115 V AC
	RB890U200	200-230 V AC
	RB890U200	200-230 V AC

Replacement Base Unit	Q890A100	—
-----------------------	----------	---

Features of model RB890

Easy trial operation and inspection
Easier troubleshooting

Easily check sequences and alarm states

Abundance of useful functions

7-segment LED

1. Sequence
2. Flame voltage
3. Alarm codes

Contact reset input

Alarms can be reset without opening the unit's door.

DISP switch

For changing display mode

RESET switch

For alarm deactivation

Alarm LED (red)

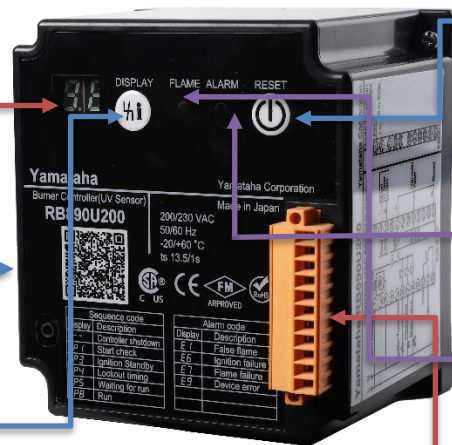
Lit during lock-out

Flame LED (green)

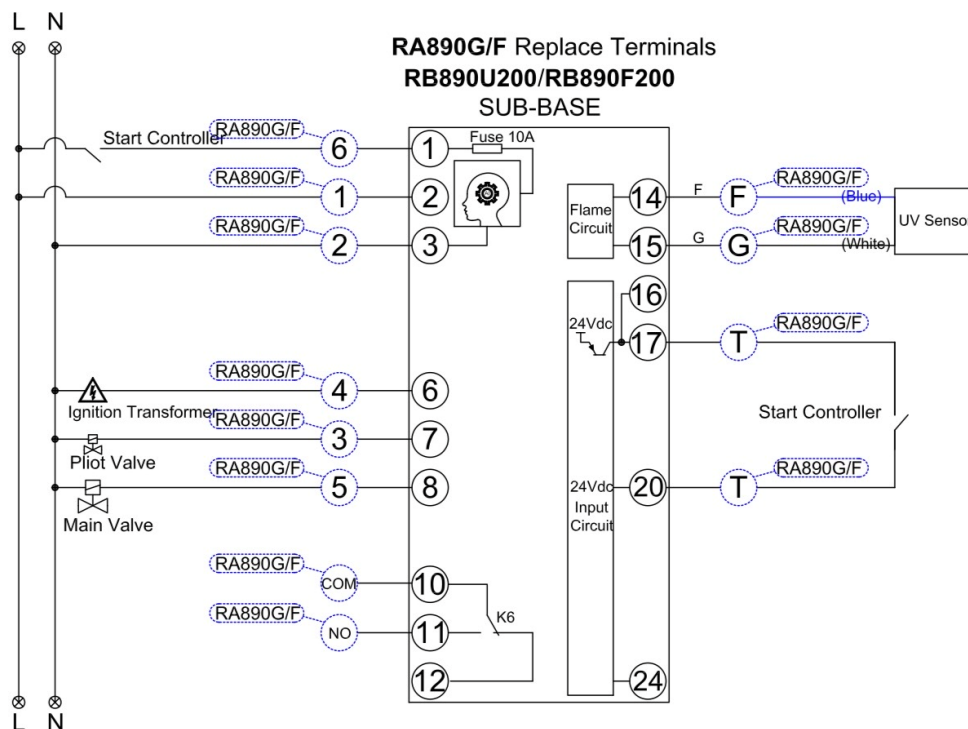
Lit when flame is detected

Flame voltage external output

Easy DC 0–5 V measurement (from front connector)



Example of upgrade using the replacement base unit



Please read "Terms and Conditions" from the following URL
before ordering and use. <https://yamataha.com/products/>

[Notice] Specifications are subject to change without notice.
No part of this publication may be reproduced or duplicated
without the prior written permission of Yamataha.