

BVM—20,25,32,40,50,65,80

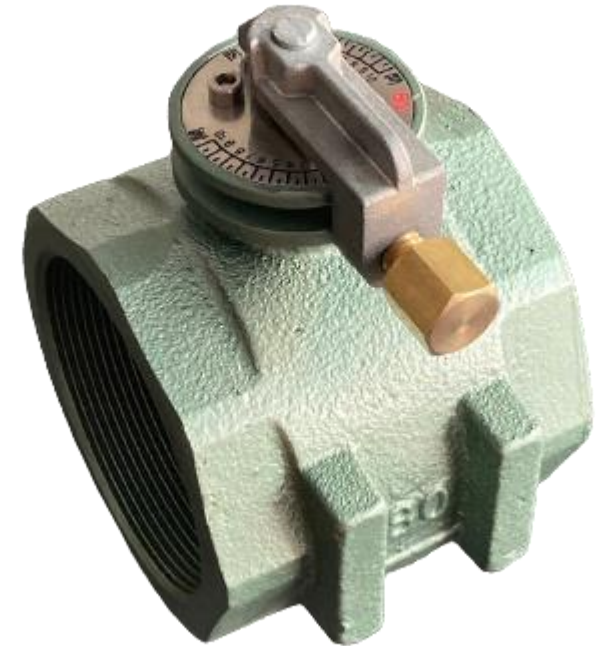
Butterfly Valve

Two types of "manual type" which can fix firmly after setting the opening degree, "control type" which can set properly for each manufacturer's motor.

Feature

■ Manual butterfly valve (BVM)

- 1 Manual butterfly valve with the opening degree indication for adjusting the flow rate.
- 2 Handle is fixed with the lock screw after setting the opening degree.
- 3 Handle is made of stainless steel, which is strong and rust-proof.
- 4 Manual butterfly valve has a full port design, which realizes little pressure loss.
- 5 Main body is the kind design, which the pipe wrench does not slip.



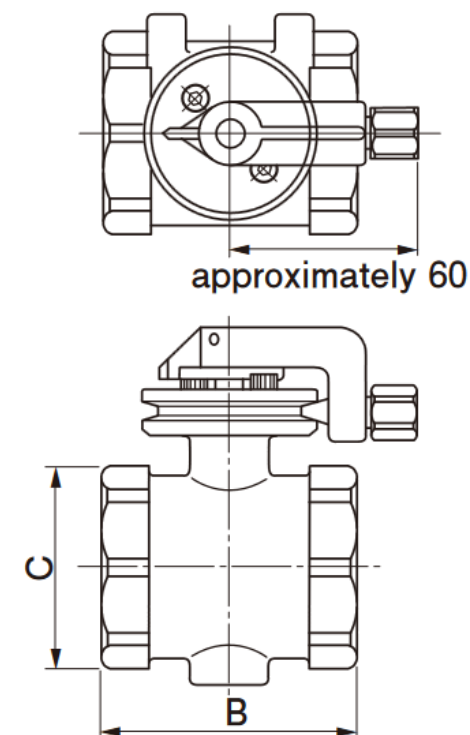
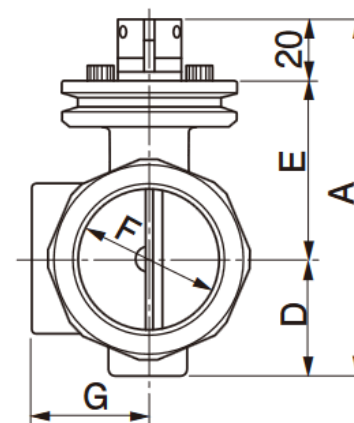
Main Usage

- For adjusting flow rate of various gas (natural gas • LP gas etc.) and air for combustion mixing.

Example of use

■ For optional

- control motor (Hi-Low, PI control and so on)
- motor setting plate
- we have linkage rod(8φ x 300L 8φ x 500L) and linkage joint, so please do not hesitate to tell us what you need.

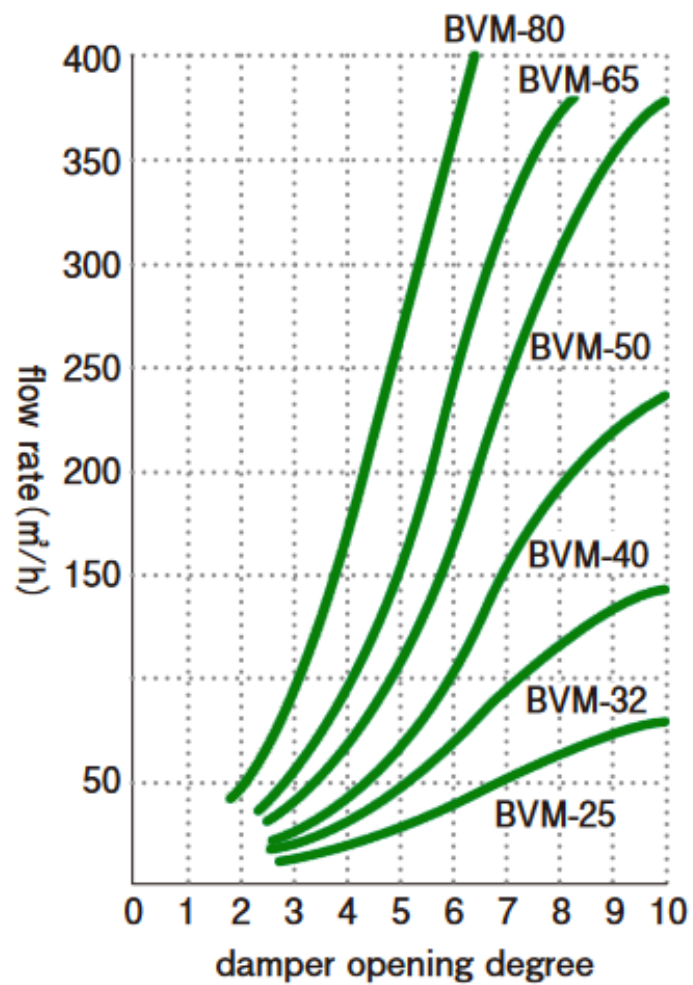


Overall size

Manual butterfly valve (BVM)

Model		BVM-20	BVM-25	BVM-32	BVM-40	BVM-50	BVM-65	BVM-80
Overall size (mm)	A	99	99	114	114	126	140	156
	B	75	75	80	80	85	95	95
	C	48	48	64	64	78	95	110
	D	30	30	37	37	44	50	59
	E	49	49	57	57	62	70	77
port size(Rc)	F(φ)	22	28	32	40	50	65	80
Overall size (mm)	G	30	30	37	37	44	55	61
Connection size(Rc)	H	3/4	1	1 1/4	1 1/2	2	2 1/2	3

Characteristic of flow rate



**BVM flow characteristics
when differential pressure
 $\Delta P = 1.5 \text{ kPa}$.**

● fluid : air (specific gravity=1)

Flow rate conversion table

ΔP conversion value ($\Delta P=1.5\text{kPa}$ basis)		specific gravity conversion value (specific gravity=1.0basis)		temperature conversion value (15°C basis)	
differential pressure ΔP (kPa)	conversion value	specific gravity	conversion value	temperature (°C)	conversion value
0.25	0.41	0.55	1.35	15	1.00
0.50	0.58	0.638	1.25	50	0.93
1.00	0.82	1.00	1.00	100	0.88
1.50	1.00	1.50	0.82	200	0.80
2.00	1.15	1.55	0.80	400	0.66
4.00	1.63	2.00	0.71	—	—

Handling Precautions

- 1 The fluid used is air / natural gas / LPG
- 2 Fluid temperature used is 80°C. (If over 80°C, please order the valve for high temperature.)
- 3 When driving a plurality of butterfly valves with one control motor, pay attention to the capability of the motor.